

# WHOLESALE CATALOG





In 2000 Scott Griffin founded Griffin Glass Tool Company. The mission of this manufacturing company is simple; flameworking equipment designed and produced by a glass artist with a clear understanding of the field it services allows for the creation of functional and adaptable glass working equipment. During the design and manufacturing phases, each tool undergoes extensive quality assurance and quality control before reaching the consumer. To achieve the level of precision that Scott demands he is assisted by a skilled team of engineers and machinists. Our design interests are focused on enhancing the abilities of the modern flameworker through advanced tooling, and helping to create a more efficient and effective work environment.

## NEW PRODUCTS

THE BUCK STAND . . . . .	1
BUCK TORCH STAND ADD-ONS . . . . .	2
COMPRESSED AIR FOOTPEDALS . . . . .	3
TANK REGULATOR FITTINGS . . . . .	7
TORCH TOP MARVERS . . . . .	8
MINI TORCH ACCESSORIES . . . . .	12
NECKING TOOLS . . . . .	15
STAINLESS TOOLS . . . . .	17
REAMERS . . . . .	20
REPLACEMENT REAMER TIPS . . . . .	21
ROUNDED & MINI PADDLES . . . . .	23
SCULPTING TOOLS . . . . .	26
STAINLESS STEEL BLADE SHAPES . . . . .	27
MALE GROUND JOINT FORMING TOOLS . . . . .	32
GROUND JOINT FORMING REAMERS . . . . .	33
SWIVELS AND BLOW HOSES . . . . .	35
STAINLESS STEEL SHEARS . . . . .	38
CLAW TOOLS . . . . .	40
FINISHING TONGS & HEAT RESISTANT SLEEVES	41
REPLACEMENT SLEEVES & . . . . .	42
HIGH TEMPERATURE WOVEN TAPE . . . . .	42
KEVLAR GLOVES . . . . .	43



# TOOLS MADE FOR FLAMWORKERS THAT ARE DESIGNED AND PRODUCED BY A FLAMWORKER

Wholesale prices are available to retailers and schools only. Please contact Griffin Glass Tools to establish a wholesale account. If you already carry our tools we would like to take the opportunity to thank you for your continued support. Please take a look at our new products in this catalog and feel free to contact us with any questions. All prices in this catalog are current as of September 2017. Prices are subject to change.

## TABLE OF CONTENTS

THE BUCK STAND .....	1
BUCK TORCH STAND ADD-ONS .....	2
FOOT PEDALS .....	3
TANK REGULATOR FITTINGS .....	7
TORCH TOP MARVERS.....	8
DEFENSE SHADES .....	11
MINI TORCH ACCESORIES .....	12
FUME EXHAUST HOODS .....	13
BENCH ROLLERS .....	14
NECKING TOOLS .....	15
OPTIC MOLDS .....	16
STAINLESS TOOLS.....	17
MENZIES MARVER .....	19
REAMERS .....	20
GRAPHITE PUSHES .....	22
GRAPHITE PADDLES & MARBLE MOLDS ....	23
SCULPTING TOOLS .....	26
LATHE TOOLS .....	30
GRAPHITE PLATES AND ROUND STOCK .....	31
GROUND JOINT TOOLS.....	32
SWIVELS AND BLOW HOSES.....	35
RAKES AND POKERS .....	37
STAINLESS STEEL SHEARS.....	38
JACKS .....	39
CLAW TOOLS/HOT FINGERS .....	40
FINISHING TONGS & HEAT RESISTANT SLEEVES.....	41
KEVLAR GLOVES AND SLEEVES .....	43





# THE BUCK STAND

## NEW - BUCK TORCH STAND

The Buck Torch Stand is a new and highly specialized tool that will change the way today's modern lampworker operates. From beginners to masters, this tool offers the artist an unrestricted full range of motion around the torch. With its sturdy and slick construction, the Buck Torch Stand gives an artist the reliability and performance that is needed to complete world class glass sculptures of any size and shape. The ease and ergonomics are unmatched. Not only does the Buck Torch Stand promote great lampworking posture, but it gives an artist the angles needed to reduce the weight of their art.

With nothing restricting the space around the artist's torch, an artist will experience positions and angles that were traditionally not thought possible. The idea of working without a flat surface under your torch is new to some artists and can seem risky, but rest assured, the angles and advantages will far outweigh any time lost learning to use this new and innovative tool.

The lift assisted shaft by itself can be securely bolted with concrete anchor bolts to the floor making for sleek space-saving torch placement in your shop or workspace. It can also be attached to our Diamond plated base for traveling or non-permanent setup. The stand attaches easily to our diamond plate base making it mobile and able to be setup just about anywhere. Either way, it eliminates the need for valuable bench space whether in the home shop or at a remote location.



**WHOLESALE - \$892.50**

RETAIL (\$1100.00)

FLAT RATE SHIPPING (\$75.00)

ITEM ID - BUCKSTAND



## A WORD FROM BUCK...

The development of the Buck Torch Stand was one of natural progression stemming from the need for more space and mobility. I quickly realized the advantages to having full range of motion around my torch.

The Buck Torch Stand is a must have for today's borosilicate furnace worker. It's space and mobility are priceless when juggling the large gathers and long pulls produced by today's methods.

I hope everyone gives this style of lampworking a try- this tool is a game changer. I believe that anyone who works with the BuckTorch Stand will quickly see the endless possibilities and advantages to this amazing tool!



THE BUCK STAND





## BUCK TORCH STAND ADD-ONS

### NEW - TRASH BUCKET

This bucket slides onto the two screws in the side of the torch stand. No tools are required to install or remove. The bucket provides a place to hold water for glass trash.

**WHOLESALE - \$27.00**

RETAIL (\$45.00)

ITEM ID - TRBUCK



### NEW - ROD BUCKET

This Buck Torch Stand add-on provides a place to hold glass rods. It slides easily on to two screws in the side. No tools required for assembly.

**WHOLESALE - \$27.00**

RETAIL (\$45.00)

ITEM ID - RODBUCK



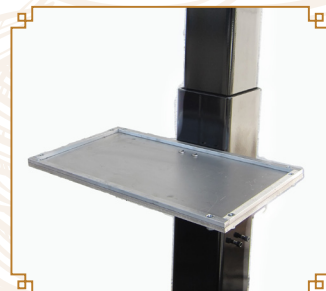
### NEW - TOOL DECK

This tool deck provides an out of the way place to set tools while working on the Buck Torch Stand. 8" x 11" table features a lip to keep tools from falling and rigid aluminum and steel construction.

**WHOLESALE - \$58.00**

RETAIL (\$80.00)

ITEM ID- BUCKDECK



### NEW - BUCK TORCH STAND PIVOT PLATE

This rotating plate is compatible with all GTT torches, and attaches easily to the top of the Buck Torch Stand.

**WHOLESALE - \$37.00**

RETAIL (\$60.00)

ITEM ID- BUCKPLATE







## FOOT PEDALS

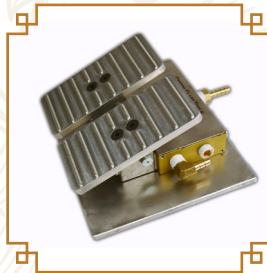
### COMPRESSED AIR FOOTPEDALS

We are pleased to announce the release of the new compressed air footpedals. They are available for both two and three-stage torches that are equipped for compressed air. Introducing compressed air into the fuel mix allows for a broader range of temperatures and chemistry. This added control makes it easier to dial in a more even heat at lower temperatures. It can even help avoid effects such as boiling and scumming while using hard to work colors.

Both pedals are available as a standalone unit, or with mounting brackets to attach to our Rock-It series.

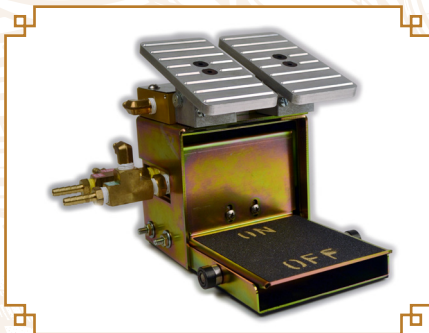
#### **TWO STAGE NEW - COMPRESSED AIR FOOTPEDAL**

**WHOLESALE - \$232.00/EACH**  
RETAIL (\$290.00)  
ITEM ID - FPAIR2

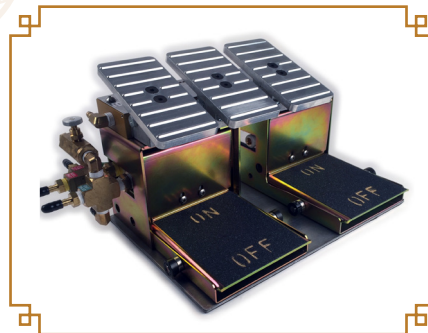


#### **THREE STAGE NEW - COMPRESSED AIR FOOTPEDAL**

**WHOLESALE - \$338.00/EACH**  
RETAIL (\$420.00)  
ITEM ID - FPAIR3



FPRI+AIR2 (PICTURED)



FPR12BP+AIR3 (PICTURED)

#### **NEW - ROCK-IT W/AIR PEDAL**

**WHOLESALE - \$582/EACH**  
RETAIL (\$730)  
ITEM ID - FPRI+AIR2

#### **NEW - ROCK-IT W/O2 BYPASS AND AIR PEDAL**

**WHOLESALE - \$622/EACH**  
RETAIL (\$780)  
ITEM ID - FPRIBP+AIR2

#### **NEW - DOUBLE ROCK-IT W/AIR PEDAL**

**WHOLESALE - \$996/EACH**  
RETAIL (\$1180)  
ITEM ID - FPR12+AIR3

#### **NEW - DOUBLE ROCK-IT W/BYPASS AND AIR PEDAL**

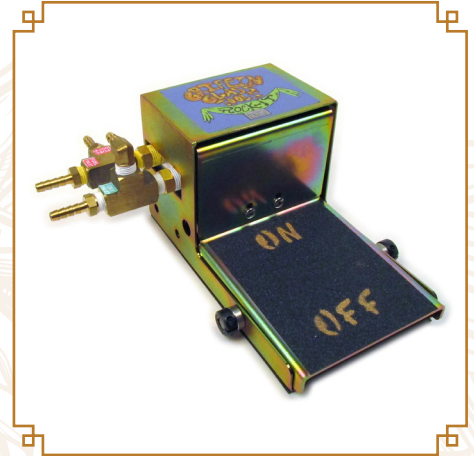
**WHOLESALE - \$1041/EACH**  
RETAIL (\$1230.00)  
ITEM ID - FPR12BP+AIR3





## GRIFFIN GLASS ROCK IT '05 FOOT PEDAL

- ◆ The Rock-It is constructed with top quality, high volume valves. You can expect years of trouble free usage with the new long lasting valves.
- ◆ This unit can be run in the open position for unlimited time periods.
- ◆ The pedal is non-electric. Thus opening and closing the gas valves is a technically sound, mechanical operation.
- ◆ The Rock-It has a maintain switch. The maintain switch will keep the outer fire on until switch is depressed a second time allowing freedom of movement.
- ◆ The steel foot pedal body offers durability and a professionally engineered design.
- ◆ The low profile design ensures ease of use and supports appropriate posture.
- ◆ As a safety feature the gas lines are located 4 inches from the floor.
- ◆ The unit acts with immediate response. Both the on and off operations of the torch are instantaneous after the switch is activated.
- ◆ The Rock-It is compatible with all 2 stage and 4 prong torches including the following: Carlisle, Carlisle Plus, Phantom, Mirage, Delta Elite, and the Modified Bethlehem. All torches must have four prong inlets.
- ◆ The Rock-It is warranted for 1 year. This includes all parts and function when the product is used properly according to the manufacturer's information.



**WHOLESALE - \$350/EACH**

RETAIL (\$440)

ITEM ID - FPRI

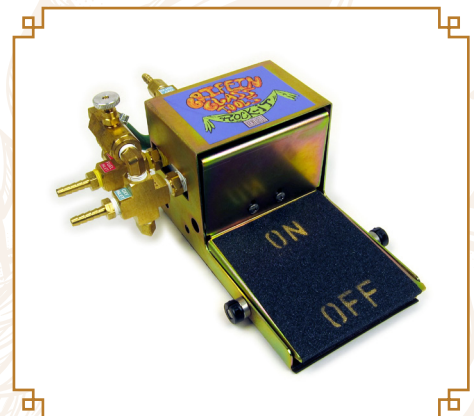
## ROCK IT '05 FOOT PEDAL WITH OXYGEN BYPASS

This is the same pedal as above but with an added oxygen bypass. The function of the oxygen bypass is to allow a metered amount of oxygen to flow through the outer fire ring to achieve a more penetrating inside fire while the foot pedal is in the off position. The bypass can also be closed to allow the foot pedal to operate in its normal function.

**WHOLESALE - \$390/EACH**

RETAIL (\$490)

ITEM ID - FPRIBP



FOOT PEDALS



## GRIFFIN GLASS TURBO SWITCH ELECTRIC FOOT PEDAL

The Griffin Glass Turbo Switch Foot Pedal can be used on GTT, Carlisle, and all other two stage torches. The pedal features a maintain switch which when depressed will ignite the outer fire. To turn off the outer fire simply depress the switch a second time. The turbo switch is ideal for rapid on/off operation. The unit is warranted for one year when used properly according to manufacturer's information.

**WHOLESALE - \$310/EACH**

RETAIL (\$410)

ITEM ID - FPT5



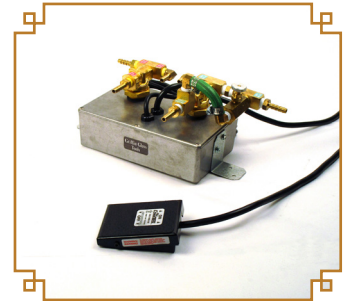
## TURBO SWITCH ELECTRIC FOOT PEDAL WITH OXYGEN BYPASS

This is the same pedal as above but with an added oxygen bypass. The function of the oxygen bypass is to allow a metered amount of oxygen to flow through the outer fire ring to achieve a more penetrating inside fire while the foot pedal is in the off position. The bypass can also be closed to allow the foot pedal to operate in its normal function.

**WHOLESALE - \$350/EACH**

RETAIL (\$460)

ITEM ID - FPTSBP



## GRIFFIN GLASS 2 STAGE ROCK IT FOOT PEDAL

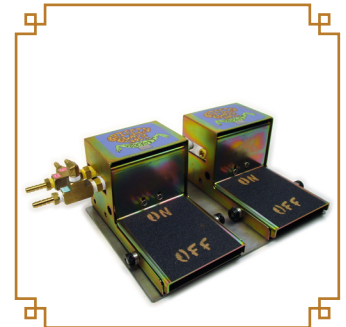
This pedal has all the same great features as the ROCK-IT and more.

- ◆ This two stage foot pedal is designed for use with any three stage torch. Its function is to open and close your preset, middle and outer fire separately. The compatible torches are the Delta Mag, Cobra, and all other 3 stage torches.
- ◆ The two stage foot pedal can also be used to operate any surface mix hand torch with one pedal while the other pedal controls the outer fire of any two stage torch.
- ◆ This two stage pedal could also be used to operate the outer fire of two separate torches set up cross-fires.

**WHOLESALE - \$660/EACH**

RETAIL (\$760)

ITEM ID - FPRI2



FOOT PEDALS



## GRIFFIN GLASS 2 STAGE ROCK IT FOOT PEDAL W/O2 BY PASS

This two stage foot pedal is designed for use with any three stage torch. It's function is to open and close the preset middle, and outer fire separately. The Rock-It is compatible with the Delta Mag, Cobra, and all other 3 stage torches. The oxygen bypass allows a metered amount of oxygen to flow through the second stage of the torch enriching the inside fire with oxygen. This creates a deeper blue center fire which is better flame atmosphere for working with silver based and crayon colors. The bypass valve is adjustable at the foot pedal and can be completely shut off.

**WHOLESALE - \$705/EACH**

RETAIL (\$810)

ITEM ID - FPRI2BP







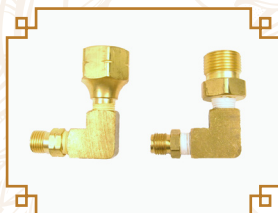
# TANK REGULATOR FITTINGS

We searched high and low for these tank regulator fittings, and we have finally found them. The assemblies below will allow you to use a standard tank mount regulator as a station regulator. The benefit is that the station regulator is typically 3 times the cost of tank mount regulators. We are selling 5 different configurations as well as the tank regulator fittings by themselves for anyone who wants to configure their own setup.

## NEW - SINGLE REGULATOR ASSEMBLY

One "B" Inlet and one tank regulator fitting, fully assembled. This allows the flameworker to work in a group environment and still have individual regulation of the gas.

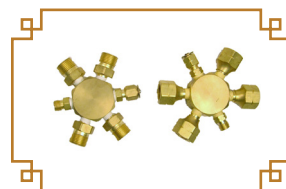
1-9 . . . \$28.00/EACH  
10+ . . . \$26.50/EACH  
RETAIL (\$48.25)  
ITEM ID - RA01



## NEW - FOUR REGULATOR ASSEMBLY WITH AUXILIARY

This assembly offers an "auxiliary" "B" that could be used to have full pressure out from the aux line. If you have visitors this would let them connect to the manifold with the additional "B" fitting.

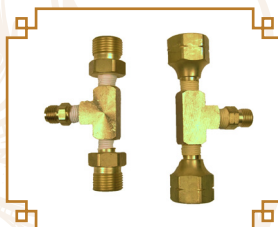
1-9 . . . \$155.40/EACH  
10+ . . . \$142.45/EACH  
RETAIL (\$259.00)  
ITEM ID - RAO4



## NEW - TWO REGULATOR ASSEMBLY

Use "trunk line" to supply gas to the "b" fitting and attach two tank regulators. This is the simple and inexpensive solution to having multiple torches set up w/individual regulators to each torch.

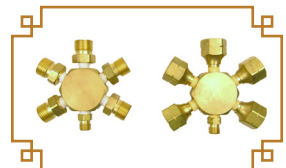
1-9 . . . \$49.00/EACH  
10+ . . . \$45.00/EACH  
RETAIL (\$80.00)  
ITEM ID - RA02



## NEW - FIVE REGULATOR ASSEMBLY

One "B" fitting inlet and five tank regulator fittings.

1-9 . . . \$165.00/EACH  
10+ . . . \$151.25/EACH  
RETAIL (\$275.00)  
ITEM ID - RA05



## NEW - THREE REGULATOR ASSEMBLY

This is the same setup as the Two Regulator Assembly, but with three tank regulator fittings.

1-9 . . . \$67.00/EACH  
10+ . . . \$62.00/EACH  
RETAIL (\$113.00)  
ITEM ID - RA03



## NEW - OXYGEN REGULATOR FITTING X 1/4" NPT

1-9 . . . \$9.00/EACH  
10+ . . . \$8.25/EACH  
RETAIL (\$15.00)  
ITEM ID - RAOXY



## NEW - PROPANE REGULATOR FITTING X 1/4" NPT

1-9 . . . \$9.00/EACH  
10+ . . . \$8.25/EACH  
(RETAIL (\$15.00))  
ITEM ID - RAPRO





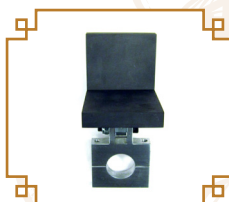
# TORCH TOP MARVERS

Griffin Glass torch mount marvers are made with high quality isostatically molded graphite and precision cut sheet metal. Each marver is specifically designed to mount firmly to the torch and not interfere with the operation or use of the torch in any way.

## NEW - HYBRID MARVER

We took the bracket for our Menzies Marver and used it on the popular 3" x 3" L-Marver

**1-9 . . . \$47.50/EACH**  
**10+ . . . \$44.25/EACH**  
RETAIL (\$77.50)  
ITEM ID - HYML



## L-SHAPED CARLISLE CC, BARRACUDA, AND PM2D TORCH MARVER

3"x3" L-Shaped

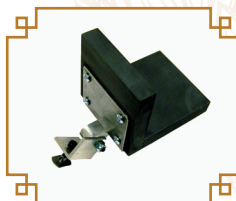
**1-9 . . . \$32.35/EACH**  
**10+ . . . \$31.00/EACH**  
RETAIL (\$52.50)  
ITEM ID - CALML



## NEW - UNDER TORCH MOUNT

311 x 311 L Marver mounts under all GTT torches.

**1-9 . . . \$47.50/EACH**  
**10+ . . . \$44.25/EACH**  
RETAIL (\$77.50)  
ITEM ID - UTML



## MIRAGE AND DELTA TORCH MARVER

3"x3" Single Plate Marver

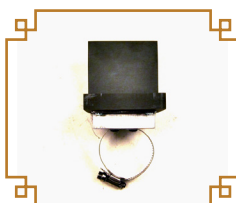
**1-24 . . . \$15.45/EACH**  
**25+ . . . \$14.45/EACH**  
RETAIL (\$25.00)  
ITEM ID - MDM



## NEW - CHAMPION L MARVER

3" x 3" L Marver for Bethlehem Champion Torch

**1-9 . . . \$32.50/EACH**  
**10+ . . . \$31.25/EACH**  
RETAIL (\$52.50)  
ITEM ID - CHML



## L-SHAPED MIRAGE AND DELTA TORCH MARVER

3"x3" L-Shaped Marver

**1-9 . . . \$33.50/EACH**  
**10+ . . . \$32.35/EACH**  
RETAIL (\$52.50)  
ITEM ID - MDML



## CARLISLE CC, BARRACUDA, AND PM2D TORCH MARVER

3"x3" Single Plate Marver

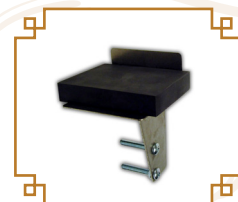
**1-24 . . . \$15.00/EACH**  
**25-49 . . \$14.00/EACH**  
**50+ . . . \$13.75/EACH**  
RETAIL (\$25.00)  
ITEM ID - CALM



## MID-RANGE PLUS, MAJOR, AND RED MAX TORCH MARVER

2"x3" Single Plate Marver

**1-24 . . . \$14.95/EACH**  
**25-49 . . \$14.50/EACH**  
**50+ . . . \$13.75/EACH**  
RETAIL (\$25.00)  
ITEM ID - MAM





## L-SHAPED MID-RANGE PLUS, MAJOR, AND RED MAX TORCH MARVER

2"x3" L-Shaped

**1-9 . . . \$31.35/EACH**

**10+ . . . \$30.00/EACH**

RETAIL (\$52.50)

ITEM ID - MAML



## MINOR TORCH MARVER

2"x3" Single Plate Marver

**1-24 . . . \$14.00/EACH**

**25-49 . . \$13.25/EACH**

**50+ . . . \$12.75/EACH**

RETAIL (\$22.00)

ITEM ID - MIM



## HOT HEAD (FUEL ONLY) TORCH MARVER

2"x3" Single Plate Marver

**1-24 . . . \$14.00/EACH**

**25-49 . . \$13.20/EACH**

**50+ . . . \$12.75/EACH**

RETAIL (\$22.00)

ITEM ID - HHM



## L-SHAPED MINOR TORCH MARVER

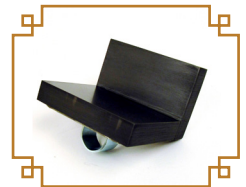
2"x3" L-Shaped Marver

**1-9 . . . \$31.35/EACH**

**10+ . . . \$30.00/EACH**

RETAIL (\$52.50)

ITEM ID - MIML



## HOT HEAD (FUEL ONLY) TORCH MARVER

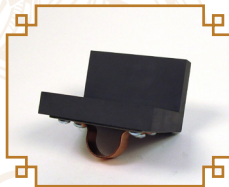
2"x3" L-Shaped Marver

**1-9 . . . \$31.35/EACH**

**10+ . . . \$30.00/EACH**

RETAIL (\$52.50)

ITEM ID - HHML



## BRAVO MARVER

2"x3" Single Plate Marver

**1-24 . . . \$15.10/EACH**

**24-49 . . \$14.75/EACH**

**50+ . . . \$14.25/EACH**

RETAIL (\$25.00)

ITEM ID - BRM



## PHANTOM, LYNX, BOBCAT, CRICKET TORCH MARVER

2"x3" Single Plate Marver

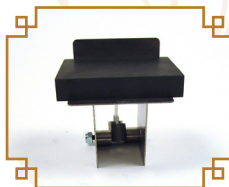
**1-24 . . . \$14.70/EACH**

**25-49 . . \$14.35/EACH**

**50+ . . . \$14.25/EACH**

RETAIL (\$25.00)

ITEM ID - LBM



## L-SHAPED BRAVO TORCH MARVER

2"x3" L-Shaped Marver

**1-9 . . . \$31.35/EACH**

**10+ . . . \$30.00/EACH**

RETAIL (\$52.50)

ITEM ID - BRML



## L SHAPED PHANTOM, LYNX, BOBCAT, CRICKET MARVER

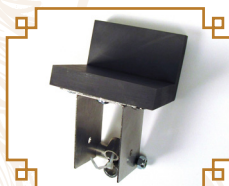
2"x3" L-Shaped Marver

**1-9 . . . \$32.35/EACH**

**10+ . . . \$31.50/EACH**

RETAIL (\$52.50)

ITEM ID - LBML



## MINI CC TORCH MARVER

2"x3" Single Plate Marver

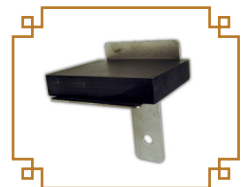
**1-24 . . . \$14.80/EACH**

**25-49 . . \$14.25/EACH**

**50+ . . . \$14.00/EACH**

RETAIL (\$25.00)

ITEM ID - MCC



TORCH TOP MARVERS

### L-SHAPED MINI CC TORCH MARVER

2"x3" L-Shaped Marver

**1-9 . . . \$31.35/EACH**

**10+ . . . \$30.00/EACH**

RETAIL (\$52.50)

ITEM ID - MCCL



### CARSLILE CC+ TORCH MARVER

3"x3" Single Plate Marver

**1-24 . . . \$15.00/EACH**

**25-49 . . \$13.75/EACH**

**50+ . . . \$13.65/EACH**

RETAIL (\$25.00)

ITEM ID - CC+



### HERBERT ARNOLD TORCH MARVER

3"x3" Single Plate Marver

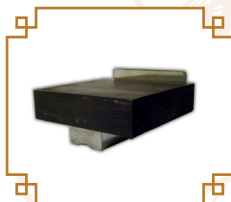
**1-24 . . . \$15.50/EACH**

**25-49 . . \$15.25/EACH**

**50+ . . . \$15.00/EACH**

RETAIL (\$25.00)

ITEM ID - HAM



### L-SHAPED CARSLILE CC+ TORCH MARVER

3"x3" L-Shaped

**1-9 . . . \$32.35/EACH**

**10+ . . . \$31.50/EACH**

RETAIL (\$52.50)

ITEM ID CC+L



### L-SHAPED HERBERT ARNOLD TORCH MARVER

3"x3" L-Shaped Marver

**1-9 . . . \$32.35/EACH**

**10+ . . . \$31.00/EACH**

RETAIL (\$52.50)

ITEM ID - HAML



### RED ROCKET MARVER

2"x3" Single Plate Marver

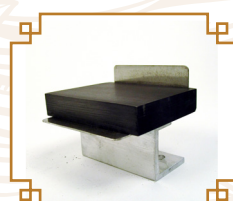
**1-24 . . . \$15.10/EACH**

**24-49 . . \$14.75/EACH**

**50+ . . . \$14.25/EACH**

RETAIL (\$25.00)

ITEM ID - RRM



### MID-RANGE AND 8M TORCH MARVER

2"x3" Single Plate Marver

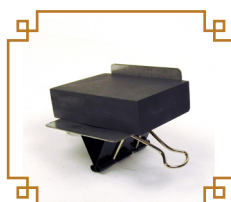
**1-24 . . . \$13.90/EACH**

**24-49 . . \$13.45/EACH**

**50+ . . . \$12.75/EACH**

RETAIL (\$25.00)

ITEM ID - MRM



### RED ROCKET L MARVER

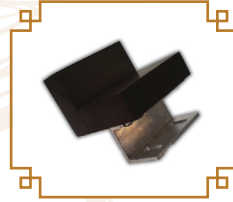
2"x3" L-Shaped Marver

**1-9 . . . \$31.35/EACH**

**10+ . . . \$30.00/EACH**

RETAIL (\$52.50)

ITEM ID - RRML



### L-SHAPED MID-RANGE AND 8M TORCH MARVER

2"x3" L-Shaped Marver

**1-9 . . . \$31.35/EACH**

**10+ . . . \$30.00/EACH**

RETAIL (\$52.00)

ITEM ID - MRML







## DEFENSE SHADES

The defense shade offers the following benefits:

- ◆ 6 mm plate glass with IR reductive coating.  
(This will reduce IR light level by up to 65% and UV light by 50+ percent)
- ◆ A full 180 degree pivot range.

The Marver Mount Defense Shade is available as an individual unit or as an assembled marver with the Defense Shade.

### GRIFFIN GLASS TORCH MAVER DEFENSE SHADE

This unit can be added to any of our L shaped marvers. When ordering just add +MMDS to the marver part number and it will ship as an assembled unit. Example: Phantom L Marver with Defense Shade would be #PHML+MMDS.

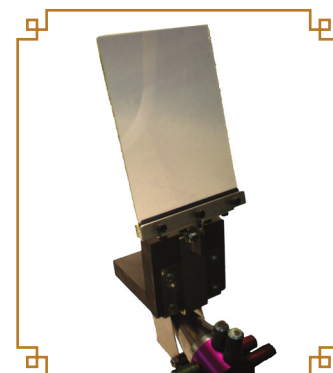
**ADD THE PRICE BELOW TO THE MARVER PRICE.**

**1-9 . . . \$37.75/EACH**

**10+ . . . \$36.50/EACH**

MSRP \$105 (W/ MARVER)

ITEM ID - MMDS

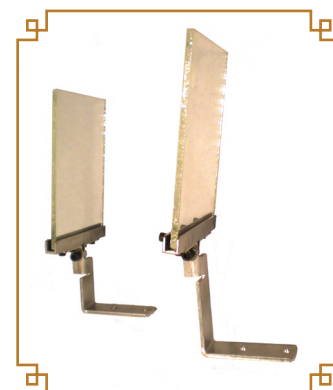


### GRIFFIN GLASS DEFENSE SHADE

The defense shade offers the following benefits:

- ◆ Durable Stainless Steel frame protects glass.
- ◆ 6mm plate glass with IR reductive coating.  
(This will reduce IR light level by up to 65% and UV light by 50+ percent)
- ◆ A full 180 degree pivot range.

This can be added to any previously purchased marver. Select torch type when ordering so we know which bracket to provide you with.



### MOUNTS ON ALL 2"X3" L TORCH MARVERS

**1-9 . . . \$37.75/EACH**

**10+ . . . \$36.50/EACH**

RETAIL (\$55.00)

ITEM ID - MMBS

### MOUNTS ON ALL 3"X3" L TORCH MARVERS

**1-9 . . . \$37.75/EACH**

**10+ . . . \$36.50/EACH**

RETAIL (\$55.00)

ITEM ID - MMBL



DEFENSE SHADES

## MINI TORCH ACCESORIES

### NEW - MINI TORCH STAND

This adjustable height stand allows you to use your Smith hand torch as a bench burner. It is ideal for very small and intricate work. The base plate is a 3 1/2" square heavy steel plate with mounting holes for optional fastening to a workbench. The height range is 3 1/2" up to 6 1/2". The pressure clip holds the Smith torch firmly in its mounted location and with a quick snapping motion; the torch is easily removed from the stand.

**1-9 . . . \$42.00/EACH**

**10+ . . . \$40.50/EACH**

RETAIL (\$60.00)

ITEM ID - MINISTAND



### NEW - MINI TORCH MAGNET

This handy magnet attaches easily to Smith Hand Torch allowing the torch to be conveniently tucked out of the way.

**WHOLESALE - \$16/EACH**

RETAIL (\$20.00)

ITEM ID - HTMO1



### HAND TORCH VALVES

**WHOLESALE - \$32.50/EACH**

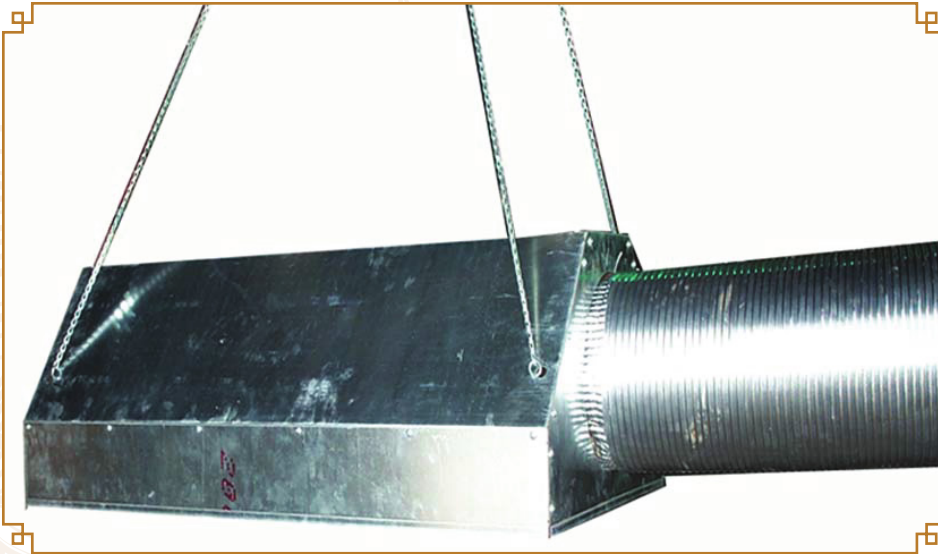
RETAIL (\$65.00)

ITEM ID - HTVO1





# FUME EXHAUST HOODS



**FAN INCLUDED IN  
PKG.#2 AND #3 ONLY**

Simplify the need for adequate ventilation. This easy to install fume exhaust hood is the perfect solution. The hood dimensions are 15" tall x 42" long x 24" wide, but the product is sold unassembled in a very compact box. Also two or more hoods can be connected to cover a greater area. We offer three very fairly priced packages listed below.

## FUME EXHAUST HOOD PACKAGE #1

- ◆ No Fan Included
- ◆ Great for mounting just above a window fan.
- ◆ Includes: Fume hood, chain and eye bolts, and screws for assembly.

**1-9 . . . \$219.00/EACH**  
**10+ . . . \$215.00/EACH**  
RETAIL (\$272.00)  
ITEM ID - FH01

## FUME EXHAUST HOOD PACKAGE #2

- ◆ Includes 10" (400cfm) Inline Fan
- ◆ Includes: Fume Hood, 10"x6' duct, (2) 10" collars, chain and eye bolts, screws for assembly, and 10" inline fan (400 cfm).

**1-9 . . . \$290.00/EACH**  
**10+ . . . \$286.00/EACH**  
RETAIL (\$370.00)  
ITEM ID - FH02

## FUME EXHAUST HOOD PACKAGE #3

- ◆ Includes 12" (650cfm) Inline Fan
- ◆ Includes: Fume Hood, 10"x6' duct, 10" collar, chain and eye bolts, screws for assembly, 10"-12" increaser, 12" male collar, and 12" inline fan (650cfm).

**1-9 . . . \$298.00/EACH**  
**10+ . . . \$295.00/EACH**  
RETAIL (\$387.00)  
ITEM ID - FH03



# BENCH ROLLERS

## GRIFFIN GLASS BENCH ROLLERS

Griffin Glass Bench Rollers have a new design that is now even taller. Rollers lock in place from 6" to 12". Features include polished brass wheels, high quality bearings, and a sturdy, stable powder-coated trapezoidal base. These are the tallest bench rollers on the market. The design of the Griffin Glass Tools Rollers will increase the comfort of your working environment, stamina, shaping ability, tube preparation time, and production time.

### Design

- ◆ Wide base offers great stability.
- ◆ Height adjustment from 8 1/4" to 13 1/2". The largest height range and tallest rollers on the market!
- ◆ Wheels are adjustable to accommodate tube and rod sizes from 4 mil. to 3 1/2".
- ◆ Top quality bearings and precision machined brass wheels allow for smooth operation.
- ◆ Durable powder coat finish offers a clean and professional look.
- ◆ Wide set screws allow stability with strong height adjustment.
- ◆ Square design allows alignment on a parallel axis.

### Usage Benefits

- ◆ Can be used in tandem for working with large tubing.
- ◆ Relieves weight while reducing fatigue to hands and wrist.
- ◆ When preparing larger tubing tandem rollers reduce preparation time.
- ◆ Allows for reserve of strength increasing actual work time.



**1-20 . . \$88.00/EACH**  
**21+ . . \$81.00/EACH**  
RETAIL (\$130.00)  
ITEM ID - GGTR0

## GRIFFIN GLASS MINI BENCH ROLLERS

The new Mini Bench Roller has a height range of 4 1/2 inches up to 7 1/2 inches. Using a threaded post and lock nut for height adjustment, the roller easily adjusts and locks firmly into place. The bearing rollers allow full movement and support both left and right movement and rotation. The bearing rollers are adjustable and will support diameters from 2mm up to 21mm.

**1-9 . . . \$69.00/EACH**  
**10+ . . . \$65.00/EACH**  
RETAIL (\$90.00)  
ITEM ID - MINIRO







## NECKING TOOLS

### NEW - BENCH SHAPER/NECKING TOOL

A round profile that blends into a right angle profile. This tool mounts vertically on the bench, allowing the glass artist to utilize it hands-free. Useful for all kinds of shaping and necking operations on the fly, without having to pick up a paddle.

**1-9 . . . \$27.30/EACH**

**10+ . . . \$26.50/EACH**

RETAIL (\$42.00)

ITEM ID - BT01



### GRIFFIN GLASS NECKING TOOL

This graphite V-shaped blade is an excellent tool for creating very tight shaping and restrictions in either blown or solid work. 3" tall x 3" wide.

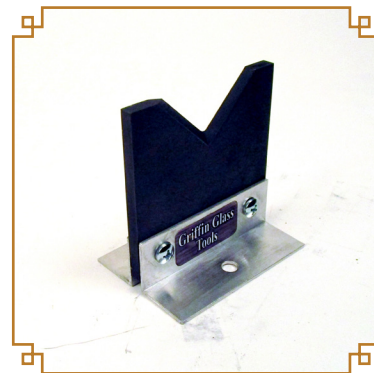
**1-10 . . . \$15.50/EACH**

**11-24 . . \$15.25/EACH**

**25+ . . . \$15.00/EACH**

RETAIL (\$25.00)

ITEM ID - GN



### GRIFFIN GLASS BRASS NECKING TOOL

This brass V-shaped blade is an excellent tool for creating very tight shaping and restrictions in either blown or solid work. 4" tall x 3" wide.

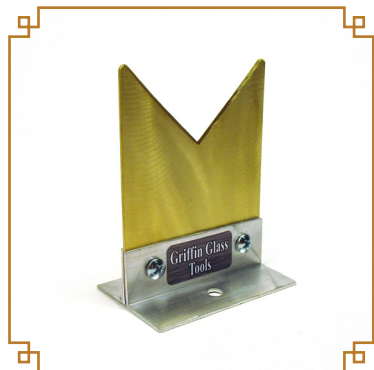
**1-10 . . . \$17.20/EACH**

**11-24 . . \$16.80/EACH**

**25+ . . . \$16.40/EACH**

RETAIL (\$30.00)

ITEM ID - BN





## OPTIC MOLDS

Griffin Glass Tools high quality optic molds are designed for murrini/millefiore and other cane. The mold can also be used for creating patterns and shapes in blown work. The molds are cast aluminum. The total height is 2.5".

### SIX POINTED STAR

1-9 . . . . \$41.00/EACH  
10+ . . . . \$36.00/EACH  
RETAIL (\$60.00)  
ITEM ID - OP6PT



### 6 INDENT

1-9 . . . . \$41.00/EACH  
10+ . . . . \$36.00/EACH  
RETAIL (\$60.00)  
ITEM ID - OP6INDENT



### 16 POINTED STAR

1-9 . . . . \$41.00/EACH  
10+ . . . . \$36.00/EACH  
RETAIL (\$60.00)  
ITEM ID - OP16PT



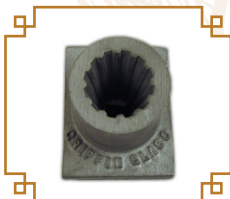
### FLOWER

1-9 . . . . \$41.00/EACH  
10+ . . . . \$36.00/EACH  
RETAIL (\$60.00)  
ITEM ID - OPFLOWER



### 12 INDENT

1-9 . . . . \$41.00/EACH  
10+ . . . . \$36.00/EACH  
RETAIL (\$60.00)  
ITEM ID - OP12INDENT



### HEART

1-9 . . . . \$41.00/EACH  
10+ . . . . \$36.00/EACH  
RETAIL (\$60.00)  
ITEM ID - OPHEART



### MOON

1-9 . . . . \$41.00/EACH  
10+ . . . . \$36.00/EACH  
RETAIL (\$60.00)  
ITEM ID - OPMOON



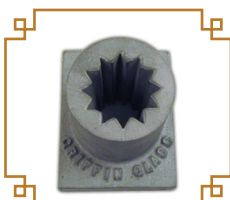
### TRIANGLE

1-9 . . . . \$41.00/EACH  
10+ . . . . \$36.00/EACH  
RETAIL (\$60.00)  
ITEM ID - OPTRIANGLE



### 12 POINTED STAR

1- . . . . \$41.00/EACH  
10+ . . . . \$36.00/EACH  
RETAIL (\$60.00)  
ITEM ID - OP12PT







# STAINLESS TOOLS

## GRIFFIN GLASS FRIT TRAYS

The new frit and powder trays keep your colors separated with removable trays. The trays are an excellent size for small vessels, marbles, beads, and more. The removable tray design makes cleanup quicker, safer, and easier than ever before.

### NEW - SINGLE FIT TRAY

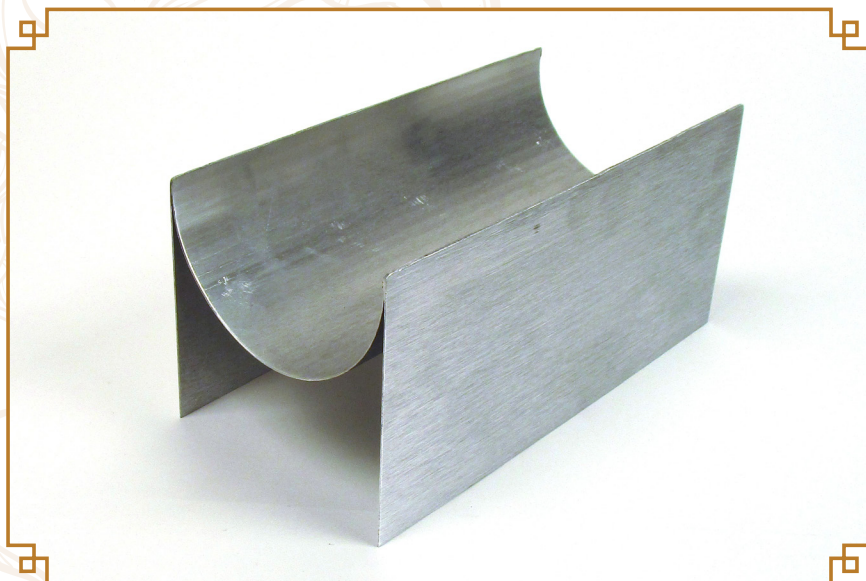
Single frit tray easily dissembles into three easy to transport parts with 6 screws.

**1-9 . . . \$22.57/EACH**

**10+ . . . \$21.75/EACH**

RETAIL (\$35.00)

ITEM ID - FTO3



### 5 SECTION FRIT TRAY

The five section tray is 13" long, 4" wide, and 3.5" tall. Each individual tray is 2" deep, 4" long, and 2" wide.

**1-19 . . . \$35.00/EACH**

**20+ . . . \$31.50/EACH**

RETAIL (\$60.00)

ITEM ID - FTO1



### 3 SECTION FRIT TRAY

The three section tray is 15" long, 6.5" wide, and 3.5" tall. Each individual tray is 3" deep, 6.5" long, and 4" wide.

**1-19 . . . \$36.25/EACH**

**20+ . . . \$33.00/EACH**

RETAIL (\$64.00)

ITEM ID - FTO2



### GRIFFIN GLASS ROD REST

Made from stainless steel, the rod rest is great for organizing work space and can be used to lay hot rods down on your work bench.

---

**1-50 . . . \$3.50/EACH**

**51-99 . . \$3.15/EACH**

**100+ . . . \$3.00/EACH**

RETAIL (\$7.50)

ITEM ID - RR01



---

### GRIFFIN GLASS KILN MANDREL RACK

Used to rest mandrels with the bead end inside the kiln. When placed in front of a kiln with a doggie door this mandrel rack allows beads to sit just inside the kiln door. Made from stainless steel with two levels.

---

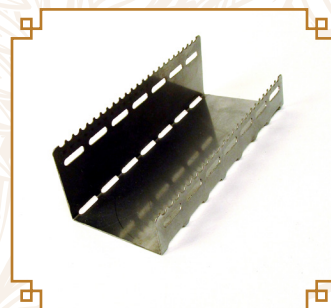
**1-50 . . . \$9.25/EACH**

**51-99 . . \$9.00/EACH**

**100+ . . . \$8.65/EACH**

RETAIL (\$16.00)

ITEM ID - KMR







## MENZIES MARVER

The original Menzies Marver is now a part of the Menzies Series produced by Griffin Glass Tools. This long trusted marver is back and is available with a number of add-ons and modifications. The standard L Marver Dimensions are a 4"x 4" bottom plate and a 2.5"x 4" back plate.

The Menzies Marver is designed to mount facing the user. This marver is great for use on top of any of the larger style GTT (Glass Torch Technologies) torches including the phantom, mirage, delta, delta mag, and cobra.

The Menzies Marver is available with a Defense Shade option. The Shade reduces the effects of IR and UV on the skin. The Defense Shade is available with or without a frame around the glass, and is designed to be quickly added or taken off the torch at a moments notice.

### **\*When ordering please specify for what torch:**

Available for the following torches: Phantom, Mirage, Delta, Delta Mag, Cobra, Kabookie, Samurai/Ninja, Grand/Champion

---

### **MENZIES TORCH TOP MARVER**

**1-9 . . . \$99.00/EACH**

**10+ . . . \$95.00/EACH**

RETAIL (\$135.00)

ITEM ID - MMA



---

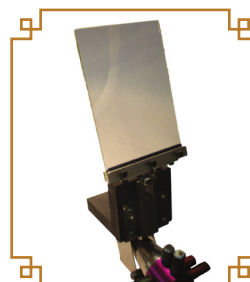
### **MENZIES MARVER DEFENSE SHADE**

**1-9 . . . \$37.20/EACH**

**10+ . . . \$35.10/EACH**

RETAIL (\$62.00)

ITEM ID - MMDS



---

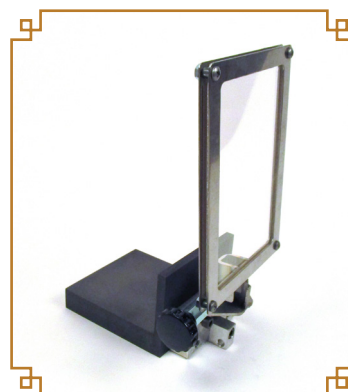
### **MENZIES MARVER DEFENSE SHADE WITH FRAME**

**1-9 . . . \$51.60/EACH**

**10+ . . . \$49.50/EACH**

RETAIL (\$86.00)

ITEM ID - MMDSF





## REAMERS

Griffin Glass Tools is proud of our complete line of fine paddles and reamers. All of our reamers are high density, fine quality graphite. We are now offering replacement parts for all of our reamers. All of our full length reamers are 4" long and produced with extreme quality and durability as our highest priority.

### NEW - SMALL BRASS REAMER

1-9 . . . . \$27.25/EACH

10+ . . . . \$26.50/EACH

RETAIL (\$43.00)

ITEM ID - SBR



This has been one of the most requested tools over the last year. The size range is 2mm-14mm. The square shape of this reamer works just like an octagonal reamer. The small square tip is ideal for pendant loops, small diamond sheared openings, and very intricate tube shapes.

### NEW - 2-22 BRASS REAMER

1-9 . . . . \$35.00/EACH

10+ . . . . \$33.75/EACH

RETAIL (\$55.00)

ITEM ID - BR222



### 2-15MM ECONOMY REAMER

1-9 . . . . \$17.75/EACH

10+ . . . . \$16.75/EACH

RETAIL (\$28.00)

ITEM ID - MRECO215



### 2-15MM DELUXE REAMER

1-9 . . . . \$22.75/EACH

10+ . . . . \$21.00/EACH

RETAIL (\$38.00)

ITEM ID - MRDEL215



### 10-25MM ECONOMY REAMER

1-9 . . . . \$23.00/EACH

10+ . . . . \$21.25/EACH

RETAIL (\$35.00)

ITEM ID - MRECO1025



### 10-25MM DELUXE REAMER

1-9 . . . . \$29.25/EACH

10+ . . . . \$27.00/EACH

RETAIL (\$45.00)

ITEM ID - MRDEL1025



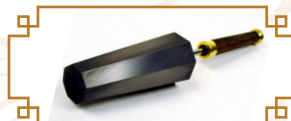
### 28-48MM DELUXE REAMER

1-9 . . . . \$58/EACH

10+ . . . . \$55.50/EACH

RETAIL (\$87.00)

ITEM ID - MRDEL2848





All the same great features as our full length economy and counterweighted graphite reamers but these are made with a steeper taper. This steeper taper and shorter graphite reamer length is designed to make it a bit easier to flare most shaped objects without the long point of the reamer bottoming out at the back of a short cup shape or foot for example.

The short line of reamers is also designed to be more durable at the small pointed tip. Since there is less thin material between the widest point of the reamer and the fine 2 mm tip, the reamer point will last longer and withstand more abuse. Thus avoiding tip breakage which is discouraging to the end user as well as us as a proud manufacturer. Our short graphite reamer lengths are 2 1/2" to 3" long.

### 2-15 MM SHORT ECONOMY

**1-9 . . . . \$16.95/EACH**  
**10+ . . . . \$16.20/EACH**  
 RETAIL (\$25.00)  
 ITEM ID - MRSECO215



### 2-15 MM SHORT MENZIES

**1-9 . . . . \$21.50/EACH**  
**10+ . . . . \$20.85/EACH**  
 RETAIL (\$35.00)  
 ITEM ID - MRSDEL215



### 2-22 MM SHORT ECONOMY

**1-9 . . . . \$17.45/EACH**  
**10+ . . . . \$16.70/EACH**  
 RETAIL (\$28.00)  
 ITEM ID - MRSECO222



### 2-22 MM SHORT MENZIES

**1-9 . . . . \$21.65/EACH**  
**10+ . . . . \$21.00/EACH**  
 RETAIL (\$38.00)  
 ITEM ID - MRSDEL222



### 3-38 MM SHORT ECONOMY

**1-9 . . . . \$24.90/EACH**  
**10+ . . . . \$24.10/EACH**  
 RETAIL (\$38.80)  
 ITEM ID - MRSECO338



### 3-38 MM SHORT MENZIES

**1-9 . . . . \$29.85/EACH**  
**10+ . . . . \$28.90/EACH**  
 RETAIL (\$48.00)  
 ITEM ID - MRSDEL338



## REPLACEMENT REAMER TIPS



PART#	DESCRIPTION	RETAIL	1-9	10+
<b>RREPS215 - NEW</b>	SHORT 2-15 REPLACEMENT TIP	\$22.00	<b>\$14.30/EACH</b>	<b>\$13.20/EACH</b>
<b>RREPS222 - NEW</b>	SHORT 2-22 REPLACEMENT TIP	\$22.00	<b>\$14.30/EACH</b>	<b>\$13.20/EACH</b>
<b>RREPS338 - NEW</b>	SHORT 3-38 REPLACEMENT TIP	\$30.00	<b>\$19.50/EACH</b>	<b>\$18.00/EACH</b>
<b>RREP215</b>	2-15 REPLACEMENT TIP	\$22.00	<b>\$14.30/EACH</b>	<b>\$13.20/EACH</b>
<b>RREP1025</b>	10-25 REPLACEMENT TIP	\$30.00	<b>\$19.50/EACH</b>	<b>\$18.00/EACH</b>





## GRAPHITE PUSHES

Griffin Glass Tools is proud to announce our new complete line of high quality graphite pushes with hardwood handles. All Menzies Series pushes are made with high density, fine quality graphite. All Menzies Series Tools are designed and produced with extreme quality and durability as our highest priority.

### 1/2" GRAPHITE PUSH

1-9 . . . . \$14.35/EACH

10+ . . . . \$14.05/EACH

RETAIL (\$26.00)

ITEM ID - MPU12



### 1" GRAPHITE PUSH

1-9 . . . . \$16.85/EACH

10+ . . . . \$16.25/EACH

RETAIL (\$30.00)

ITEM ID - MPU10



### 5/8" GRAPHITE PUSH

1-9 . . . . \$14.65/EACH

10+ . . . . \$14.30/EACH

RETAIL (\$26.00)

ITEM ID - MPU58



### 5/8" PUSH W/ TUNGSTEN TIP

1-9 . . . . \$18.50/EACH

10+ . . . . \$17.85/EACH

RETAIL (\$35.00)

ITEM ID - MPU58TG



### 3/4" GRAPHITE PUSH

1-9 . . . . \$15.45/EACH

10+ . . . . \$15.10/EACH

RETAIL (\$28.00)

ITEM ID - MPU34



### 3/4" PUSH W/ TUNGSTEN TIP

1-9 . . . . \$19.50/EACH

10+ . . . . \$18.85/EACH

RETAIL (\$36.00)

ITEM ID - MPU34TG







# GRAPHITE PADDLES & MARBLE MOLDS

## ROUNDED PADDLES

One rounded and one square edge on these graphite paddles make them more versatile than our standard series for all around use. They are also very well suited for work on the lathe! All feature wooden handles and sturdy hand assembled construction. The graphite is the same fine, high density graphite featured on all of our graphite tools.

### NEW - SM. NARROW ROUNDED PADDLE

Graphite Dimensions: .75" x 2.75"

1-9 . . . . \$19.60/EACH

10+ . . . . \$18.75/EACH

RETAIL (\$28.00)

ITEM ID - NPRO2



### NEW - 2" X 4" ROUNDED PADDLE

Features Brass Counterweight

1-9 . . . . \$34.75/EACH

10+ . . . . \$33.00/EACH

RETAIL (\$55.00)

ITEM ID - MPDEL24R



### NEW - LG. NARROW ROUNDED PADDLE

Graphite Dimensions: 1" x 4"

1-9 . . . . \$22.40/EACH

10+ . . . . \$23.65/EACH

RETAIL (\$32.00)

ITEM ID - NPRO1



## MINI PADDLES

New mini paddles on wood or phenolic handles. Graphite measures: 1.25" X 1.625" X .375"

### NEW - ECONOMY MINI PADDLE

1-9 . . . . \$13.00/EACH

10+ . . . . \$12.60/EACH

RETAIL (\$20.00)

ITEM ID - SMPECO



### NEW - DELUXE MINI PADDLE

1-9 . . . . \$15.65/EACH

10+ . . . . \$15.15/EACH

RETAIL (\$26.00)

ITEM ID - SMPDEL



## GRAPHITE PADDLES

Griffin Glass Tools is proud of our complete line of fine counter weighted paddles with hardwood handles and all stainless steel construction. All Menzie Series paddles are high density, fine quality graphite. All Menzie Series Tools are designed and produced with extreme quality and durability as our highest priority.

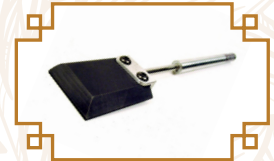
### 2"X4" PADDLE

1-9 . . . . \$29.25/EACH  
10+ . . . . \$27.00/EACH  
RETAIL (\$45.00)  
ITEM ID - MPDEL24



### MINI ULTIMATE PADDLE

1-9 . . . . \$26.75/EACH  
10+ . . . . \$25.00/EACH  
RETAIL (\$42.00)  
ITEM ID - MPULT00



### 3"X4" PADDLE

1-9 . . . . \$29.25/EACH  
10+ . . . . \$27.00/EACH  
RETAIL (\$45.00)  
ITEM ID - MPDEL34



### 3"X6" ULTIMATE PADDLE

1-9 . . . . \$45.50/EACH  
10+ . . . . \$42.00/EACH  
RETAIL (\$70.00)  
ITEM ID - MPULT36



### 3"X6" PADDLE

1-9 . . . . \$31.20/EACH  
10+ . . . . \$28.80/EACH  
RETAIL (\$48.00)  
ITEM ID - MPDEL36



### 4"X6" ULTIMATE PADDLE

1-9 . . . . \$52.00/EACH  
10+ . . . . \$48.00/EACH  
RETAIL (\$80.00)  
ITEM ID - MPULT46



### 4"X6" PADDLE

1-9 . . . . \$37.70/EACH  
10+ . . . . \$34.80/EACH  
RETAIL (\$58.00)  
ITEM ID - MPDEL46



### GRAPHITE SMASHER

1-9 . . . . \$58.00/EACH  
10+ . . . . \$55.00/EACH  
RETAIL (\$80.00)  
ITEM ID - SM56



### 6"X8" LARGE PADDLE

1-9 . . . . \$64.00/EACH  
10+ . . . . \$58.00/EACH  
RETAIL (\$90.00)  
ITEM ID - MPDEL68





## GRAPHITE PADDLES WITH AN ALUMINUM HANDLE

This line of paddles uses the same top grade of graphite as all of our other graphite products. These paddles have a 6" long handle and a 2" stainless steel post connecting the handle to the graphite plate.

### SMALL PADDLE

1-9 . . . \$19.00/EACH

10+ . . . \$18.75/EACH

RETAIL (\$35.00)

ITEM ID - GP00



### 3"X5" PADDLE

1-24 . . . \$22.85/EACH

25+ . . . \$22.25/EACH

RETAIL (\$40.00)

ITEM ID - GP03



### 2"X3" PADDLE

1-24 . . . \$18.30/EACH

25+ . . . \$17.85/EACH

RETAIL (\$32.00)

ITEM ID - GP01



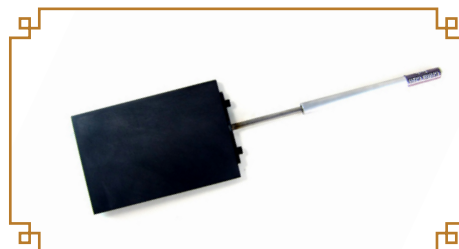
### 4"X6" PADDLE

1-24 . . . \$26.00/EACH

25+ . . . \$24.50/EACH

RETAIL (\$45.00)

ITEM ID - GP04



### 2"X4" PADDLE

1-24 . . . \$19.35/EACH

25+ . . . \$18.75/EACH

RETAIL (\$32.00)

ITEM ID - GP02



## MARBLE MOLDS WITH AN ALUMINUM HANDLE

All of the marble molds are a 2"x3" graphite block on a 6" long aluminum handle.

### 7/8" AND 1" MARBLE MOLD

1-24 . . . \$19.00/EACH

25+ . . . \$17.45/EACH

RETAIL (\$35.00)

ITEM ID - MM02



### 5/8", 7/8", AND 1" MARBLE MOLD

1-24 . . . \$20.30/EACH

25+ . . . \$19.75/EACH

RETAIL (\$40.00)

ITEM ID - MM03





## SCULPTING TOOLS

### BUTTERKNIVES

These graphite knives have a nice sharp edge all the way around the outside of the elongated oval blade. The middle of the blade is very narrow and slightly contoured. The sculpting benefits of these tools are almost endless!

#### NEW - SM. BUTTERKNIFE

1-9 . . . . \$27.30/EACH

10+ . . . . \$26.50/EACH

RETAIL (\$42.00)

ITEM ID - GLK03



#### NEW - LG. BUTTERKNIFE

1-9 . . . . \$29.90/EACH

10+ . . . . \$28.75/EACH

RETAIL (\$46.00)

ITEM ID - GLK02



### SCULPTING/LATHE KNIVES

#### NEW - "THE BLADE"

This 4.5mm thick blade is a versatile tool at the lathe or the bench for many sculpting and shaping operations. As a lathe tool, it is useful for operations such as flaring, necking, or paddling. The triangular blade comes to a point which can be used for flaring or separating.

1-9 . . . . \$36.40/EACH

10+ . . . . \$35.50/EACH

RETAIL (\$52.00)

ITEM ID - GLK04



#### NEW - "FEMALE JOINT SHAPING TOOL"

The primary purpose of this tool is to accurately and efficiently shape the outside of a female joint on the lathe in conjunction with a taper tool held in the tail stock. It's crisp edges and multiple contours are also useful in a variety of other shaping operations.

1-9 . . . . \$30.80/EACH

10+ . . . . \$29.75/EACH

RETAIL (\$44.00)

ITEM ID - GLK05





## NEW - INSIDE SCULPTING TOOLS - STAINLESS STEEL BLADE SHAPES

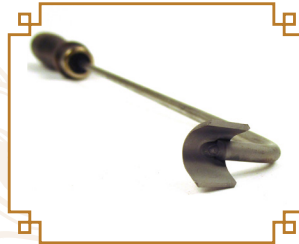
Modeled after our popular ball-end inside sculpting tools, these tools feature a sturdy stainless steel blade for even more sculpting possibilities! There are six useful shapes currently available. (Please use part numbers while ordering to ensure accurate order fulfillment.)



IST-FV



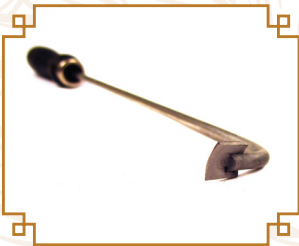
IST-FH



IST-LU



IST-LD



IST-SU



IST-SD

ITEM ID - **IST-FV (FLAT VERTICAL BLADE)**

ITEM ID - **IST-FH (FLAT HORIZONTAL BLADE)**

ITEM ID - **IST-LU (LARGE UPCURVED BLADE)**

ITEM ID - **IST-LD (LARGE DOWCURVED BLADE)**

ITEM ID - **IST-SU (SMALL UPCURVED BLADE)**

ITEM ID - **IST-SD (SMALL DOWCURVED BLADE)**

**1-9 \$22.75/EACH**

**10+ \$22.00/EACH**

RETAIL (\$35.00)

## INSIDE SCULPTING TOOLS

Modeled after the popular hot shop inside sculpting tools. Simply open a bubble or tube form and spot heat the area to be shaped. Then use this tool to go inside the bubble to push out details in a sculpted object such as eye brows, nose, and cheek bones. These can be used for any number of other shaping and sculpting techniques as well. The 5/16 and 9/16 are brass and the 3/8 and 1/2 are stainless steel. Both items can be used in the same fashion.

### 5/16"

**1-9 . . . \$13.20/EACH**

**10+ . . . \$12.85/EACH**

RETAIL (\$22.00)

ITEM ID - IST516



### 1/2"

**1-9 . . . \$15.20/EACH**

**10+ . . . \$15.80/EACH**

RETAIL (\$26.00)

ITEM ID - IST12



### 3/8"

**1-9 . . . \$14.10/EACH**

**10+ . . . \$13.60/EACH**

RETAIL (\$24.00)

ITEM ID - IST38



### 9/16"

**1-9 . . . \$16.30/EACH**

**10+ . . . \$15.85/EACH**

RETAIL (\$28.00)

ITEM ID - IST916



## SCULPTING TOOLS TAGS

This is another line of tools designed after the long trusted hot shop tools known as “tags”. In the hot shop, this is the one and only paddle on most blowers bench. Use the flat surface anywhere a thin and narrow paddle is needed for sculpting or shaping. All three sides have a sharpened edge that can be used as a knife blade for carving lines and sculpting details.

### SMALL SQUARE TIP TAG

1-9 . . . . \$22.00/EACH  
10+ . . . . \$21.20/EACH  
RETAIL (\$38.00)  
ITEM ID - TSQ



### MEDIUM TAG

1-9 . . . . \$26.40/EACH  
10+ . . . . \$25.60/EACH  
RETAIL (\$45.00)  
ITEM ID - TMR



### SMALL ROUNDED TIP TAG

1-9 . . . . \$22.00/EACH  
10+ . . . . \$21.20/EACH  
RETAIL (\$38.00)  
ITEM ID - TSR



### LARGE TAG

1-9 . . . . \$29.50/EACH  
10+ . . . . \$28.70/EACH  
RETAIL (\$52.00)  
ITEM ID - TLR



## BRASS KNIVES

These brass knives are designed for all kinds of sculpting techniques. Spot heat an area and use these perfectly shaped knife blades to push, carve, and sculpt crisp clean details in any solid or hollow form. The filet knife has two useful edges as well as a pointed tip for a great variety of uses. The filet knife has a very nice knife edge that rounds out to the tip to allow for smooth follow through on carved lines. The blades are attached to the round post with durable rivet pins for excellent tool longevity

### BRASS FILET KNIFE

1-9 . . . . \$28.75/EACH  
10+ . . . . \$27.25/EACH  
RETAIL (\$50.00)  
ITEM ID - BFK01



### BRASS STEAK KNIFE

1-9 . . . . \$25.50/EACH  
10+ . . . . \$24.00/EACH  
RETAIL (\$45.00)  
ITEM ID - BSK01





We put our glass working experience in the driver seat while designing this awesome new line of sculpting tools. We put great emphasis on the sharpened edge on all of these items. The sculpting edge is sharp enough to produce a crisp sharp, carved line, but not so pointed that it will chip or wear easily. The connection point of the graphite and metal is a rigid metal block with two screws and a wider graphite base section for added durability. This adds production process to the tool but makes it much more functional.

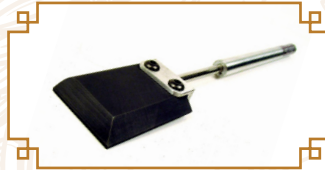
### MINI ULTIMATE PADDLE

**1-9 . . . . \$26.75/EACH**

**10+ . . . . \$25.00/EACH**

RETAIL (\$42.00)

ITEM ID - MPULTOO



### TRIANGLE TOOL REGULAR

**1-9 . . . . \$28.50/EACH**

**10+ . . . . \$26.25/EACH**

RETAIL (\$45.00)

ITEM ID - TTR



### GRAPHITE SCULPTING KNIFE

**1-9 . . . . \$29.50/EACH**

**10+ . . . . \$27.50/EACH**

RETAIL (\$50.00)

ITEM ID - GSF





## LATHE TOOLS

These are the most requested custom lathe tools, so we made them part of our line. Use these tools at the lathe for welding, forming, and flaring.

### 1" RECTANGLE SHAPING TOOL

1-9 . . . . \$16.00/EACH

10+ . . . . \$15.10/EACH

RETAIL (\$30.00)

ITEM ID - RCST1



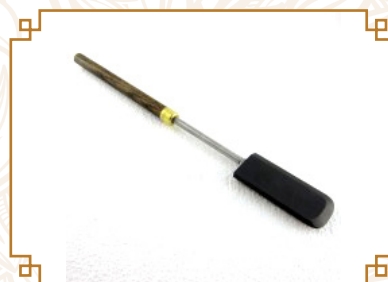
### GRAPHITE LATHE KNIFE

1-9 . . . . \$32.50/EACH

10+ . . . . \$32.00/EACH

RETAIL (\$50.00)

ITEM ID - GLK01



### 1/2" ROUND SHAPING TOOL

1-9 . . . . \$14.00/EACH

10+ . . . . \$13.10/EACH

RETAIL (\$25.00)

ITEM ID - RST12



## FLARING TOOLS

Flaring Tools are used for many different operations at the bench, as well as on the lathe. Listed are the 3 most requested sizes. Keep these in stock for a simple steady selling tool.

### SMALL FLARE TOOL

1-9 . . . . \$13.25/EACH

10+ . . . . \$12.00/EACH

RETAIL (\$20.00)

ITEM ID - SFT



### LARGE FLARE TOOL

1-9 . . . . \$21.50/EACH

10+ . . . . \$19.25/EACH

RETAIL (\$35.00)

ITEM ID - LFT



### MEDIUM FLARE TOOL

1-9 . . . . \$19.75/EACH

10+ . . . . \$18.00/EACH

RETAIL (\$32.00)

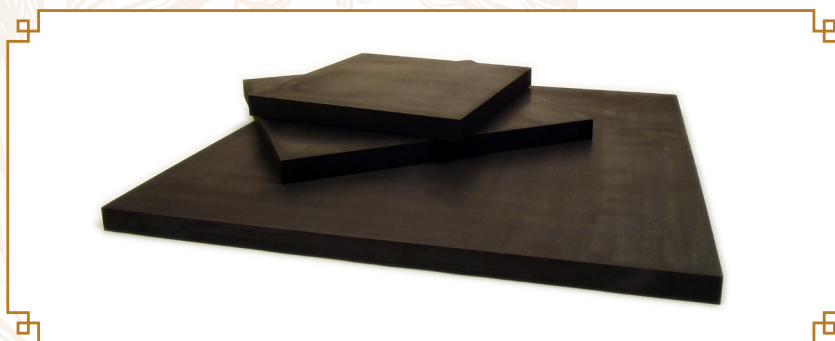
ITEM ID - MFT





## GRAPHITE PLATES AND ROUND STOCK

Our graphite plates are sanded and polished to a fine 400 grit finish on all sides. Our round graphite rods are turned with a polished to a fine finish with a tolerance of .005+- on the diameter of the rod. The rods are 12" long and have unfinished ends (not shaped or rounded over). Both plate and round stock are made of high grade isostatic graphite.



PART#	DESCRIPTION	RETAIL	1-9	10+
IGP66	6"x 6"x1/2" ISO. GRAPHITE PLATE	\$45.00	\$27.00	\$25.00
IGP88	8"x 8"x1/2" ISO. GRAPHITE PLATE	\$65.00	\$37.00	\$35.00
IGP12	12"x12"x1/2" ISO. GRAPHITE PLATE	\$85.00	\$58.00	\$56.00



PART#	DESCRIPTION	RETAIL	1-9	10+
GGM10A	1/2" ROUND X 12" LONG	\$17.00	\$12.75	\$12.25
GGM12A	5/8" ROUND X 12" LONG	\$20.00	\$13.75	\$13.25
GGM14A	3/4" ROUND X 12" LONG	\$26.00	\$14.80	\$14.30
GGM18A	1" ROUND X 12" LONG	\$32.00	\$18.00	\$17.25





# GROUND JOINT TOOLS

## NEW - MALE GROUND JOINT FORMING TOOLS

Make your own male 10-1 joints quickly and easily. First, establish where the back should of your joint will be and gather or thicken that area slightly, pull your tubing to a slight taper then get the whole thing hot and blow into the male forming tool. You'll end up with a perfect taper every time. Make colored joints or joints from lined tubing in just a couple of steps. We chose brass instead of graphite for this product for longevity and consistency of the formed joint shape after multiple uses.



PART#	DESCRIPTION	RETAIL	1-9	10+
GGM10W	10MM MALE GROUND JOINT FORMING ON WOOD HANDLE	\$35.00	\$16.50	\$15.55
GGM12W	12MM MALE GROUND JOINT FORMING ON WOOD HANDLE	\$35.00	\$16.50	\$15.55
GGM14W	14MM MALE GROUND JOINT FORMING ON WOOD HANDLE	\$35.00	\$16.50	\$15.55
GGM18W	18MM MALE GROUND JOINT FORMING ON WOOD HANDLE	\$35.00	\$17.75	\$16.85



PART#	DESCRIPTION	RETAIL	1-9	10+
GGM10A	10MM GROUND JOINT MALE FORMING ON ALUMINUM HANDLE	\$40.00	\$18.50	\$17.75
GGM12A	12MM GROUND JOINT MALE FORMING ON ALUMINUM HANDLE	\$40.00	\$18.50	\$17.75
GGM14A	14MM GROUND JOINT MALE FORMING ON ALUMINUM HANDLE	\$40.00	\$18.50	\$17.75
GGM18A	18MM GROUND JOINT MALE FORMING ON ALUMINUM HANDLE	\$42.00	\$19.75	\$18.85



## NEW - GROUND JOINT FORMING REAMERS

This brass reamer is a 1-10 taper which has been machined to  $\pm 0.001$ " The means when you ream a fitting it should be a nice snug joint connection with little effort. This universal reamer size range is just taller than a 10mm fitting on the small end and just wider than a 19mm fitting at the widest point. Our individually sized joint forming tools have been very popular and have become trusted for their effectiveness and accuracy.



PART#	DESCRIPTION	RETAIL	1-9	10+
<b>GGR10W</b>	10MM FEMALE REAMER ON WOOD HANDLE	\$35.00	<b>\$18.10</b>	<b>\$17.25</b>
<b>GGR12W</b>	12MM FEMALE REAMER ON WOOD HANDLE	\$35.00	<b>\$18.10</b>	<b>\$17.25</b>
<b>GGR14W</b>	14MM FEMALE REAMER ON WOOD HANDLE	\$35.00	<b>\$18.10</b>	<b>\$17.25</b>
<b>GGR18W</b>	18MM FEMALE REAMER ON WOOD HANDLE	\$35.00	<b>\$18.10</b>	<b>\$17.25</b>



PART#	DESCRIPTION	RETAIL	1-9	10+
<b>GGR10A</b>	10MM FEMALE REAMER ON ALUMINUM HANDLE	\$40.00	<b>\$20.10</b>	<b>\$19.25</b>
<b>GGR12A</b>	12MM FEMALE REAMER ON ALUMINUM HANDLE	\$40.00	<b>\$20.10</b>	<b>\$19.25</b>
<b>GGR14A</b>	14MM FEMALE REAMER ON ALUMINUM HANDLE	\$40.00	<b>\$20.10</b>	<b>\$19.25</b>
<b>GGR18A</b>	18MM FEMALE REAMER ON ALUMINUM HANDLE	\$40.00	<b>\$20.10</b>	<b>\$19.25</b>



## NEW - UNIVERSAL GROUND JOINT REAMER

1-9 . . . . \$37.25/EACH

10+ . . . . \$36.75/EACH

RETAIL (\$62.00)

ITEM ID - GGUNI



GROUND JOINT TOOLS

## GROUND JOINT FORMING PLUGS

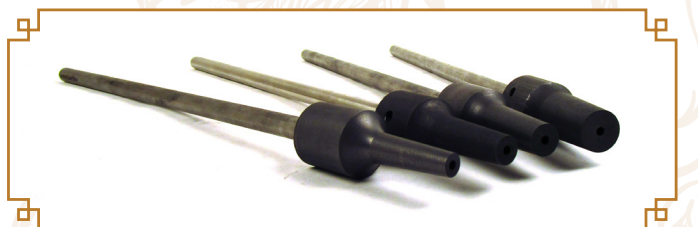
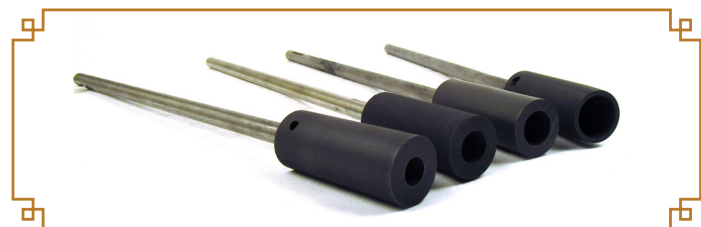
PART#	DESCRIPTION	RETAIL	1-9	10+
<b>GGP10W</b>	10MM FEMALE PLUG ON WOOD HANDLE	\$35.00	<b>\$16.50</b>	<b>\$15.55</b>
<b>GGP12W</b>	12MM FEMALE PLUG ON WOOD HANDLE	\$35.00	<b>\$16.50</b>	<b>\$15.55</b>
<b>GGP14W</b>	14MM FEMALE PLUG ON WOOD HANDLE	\$35.00	<b>\$16.50</b>	<b>\$15.55</b>
<b>GGP18W</b>	18MM FEMALE PLUG ON WOOD HANDLE	\$35.00	<b>\$16.50</b>	<b>\$15.55</b>
<b>GGP10A</b>	10MM FEMALE PLUG ON ALUMINUM HANDLE	\$40.00	<b>\$18.50</b>	<b>\$17.65</b>
<b>GGP12A</b>	12MM FEMALE PLUG ON ALUMINUM HANDLE	\$40.00	<b>\$18.50</b>	<b>\$17.65</b>
<b>GGP14A</b>	14MM FEMALE PLUG ON ALUMINUM HANDLE	\$40.00	<b>\$18.50</b>	<b>\$17.65</b>
<b>GGP18A</b>	18MM FEMALE PLUG ON ALUMINUM HANDLE	\$40.00	<b>\$18.50</b>	<b>\$17.65</b>



## GROUND JOINT HOLDING TOOLS

Our ground joint holders are top notch! We have made the handle out of Stainless Steel, but we have had it textured for more comfortable handling and smoother rotation. The graphite is super high density and made to hold up to harsh working conditions. The sizes we currently offer are 10mm, 12mm, 14mm, and 18mm Male and Female holding tools. (For reference, we named these tools for the glass shape that is being held, not the shape of the graphite on the tool!)

PART#	DESCRIPTION	RETAIL	1-9	10+
<b>GGH10M</b>	10MM MALE GROUND JOINT HOLDER	\$40.00	<b>\$24.50</b>	<b>\$23.75</b>
<b>GGH12M</b>	12MM MALE GROUND JOINT HOLDER	\$40.00	<b>\$24.50</b>	<b>\$23.75</b>
<b>GGH14M</b>	14MM MALE GROUND JOINT HOLDER	\$40.00	<b>\$24.50</b>	<b>\$23.75</b>
<b>GGH18M</b>	18MM MALE GROUND JOINT HOLDER	\$40.00	<b>\$24.50</b>	<b>\$23.75</b>
<b>GGH10F</b>	10MM FEMALE GROUND JOINT HOLDER	\$40.00	<b>\$24.50</b>	<b>\$23.75</b>
<b>GGH12F</b>	12MM FEMALE GROUND JOINT HOLDER	\$40.00	<b>\$24.50</b>	<b>\$23.75</b>
<b>GGH14F</b>	14MM FEMALE GROUND JOINT HOLDER	\$40.00	<b>\$24.50</b>	<b>\$23.75</b>
<b>GGH18F</b>	18MM FEMALE GROUND JOINT HOLDER	\$40.00	<b>\$24.50</b>	<b>\$23.75</b>







## SWIVELS AND BLOW HOSES

### NEW - 3/8" 90° SWIVEL W/ LATHE MOUNTING BRACKET

1-9 . . . . \$40.40  
10+ . . . . \$39.75  
RETAIL (\$63.00)  
ITEM ID - SWIVEL3890-1



### NEW - 3/8" STRAIGHT SWIVEL

1-9 . . . . \$38.90  
10+ . . . . \$37.40  
RETAIL (\$60.00)  
ITEM ID - SWIVEL38ST-1



### NEW - 3/8" 90° SWIVEL W/ LATEX TUBING

1-9 . . . . \$45.30  
10+ . . . . \$43.75  
RETAIL (\$72.00)  
ITEM ID - SWIVEL3890-2



### NEW - 3/8" STRAIGHT SWIVEL W/LATEX HOSE

1-9 . . . . \$41.00  
10+ . . . . \$39.90  
RETAIL (\$70.00)  
ITEM ID - SWIVEL38ST-2



### NEW - 3/8" 90° SWIVEL W/SILICONE TUBING

1-9 . . . . \$45.30  
10+ . . . . \$43.75  
RETAIL (\$72.00)  
ITEM ID - SWIVEL3890-3



### NEW - 3/8" STRAIGHT SWIVEL W/SILICONE HOSE

1-9 . . . . \$41.00  
10+ . . . . \$39.90  
RETAIL (\$70.00)  
ITEM ID - SWIVEL38ST-3



These swivels are made entirely of Stainless Steel. This material spins freely and easily and won't bind up and build corrosion like brass swivels! The inside dimensions are as large as possible in order to avoid blockage from saliva. Both sides of the swivel spin for most free movement possible. We offer three different styles of swivels- 90 degree swivels in 1/4" and 3/8" sizes. All three sizes are available in sets including either latex or silicone hose.

---

### **NEW - 1/4" 90° SWIVEL W/ LATEX TUBING**

**1-9 . . . \$35.00/EACH**

**10+ . . . \$34.25/EACH**

RETAIL (\$57.00)

ITEM ID - SWIVEL02



---

### **NEW - 1/4" 90° SWIVEL W/ SILICONE TUBING**

**1-9 . . . \$35.00/EACH**

**10+ . . . \$34.25/EACH**

RETAIL (\$57.00)

ITEM ID - SWIVEL03



---

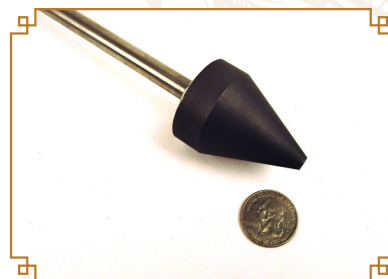
### **NEW - STRAIGHT SOPHIETTA**

Graphite measures 1.5" at the large end and .25" at the small end. Stainless handle is approx. 10" long.

**\$27.00/EACH**

RETAIL (\$48.00)

ITEM ID - SPO1



---

### **1/4" 90° SWIVEL**

**1-9 . . . \$27.00/EACH**

**10+ . . . \$26.25/EACH**

RETAIL (\$45.00)

ITEM ID - SWIVEL01



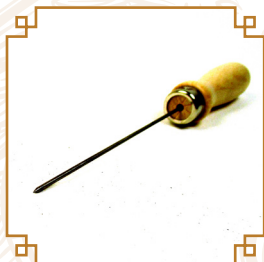


## RAKES AND POKERS

Pointed, straight tungsten rod mounted in a wood handle. Used to poke holes in glass, drag through colors, make bubbles, and more.

### 1/16" TUNGSTEN STRAIGHT RAKE/ POKER WITH WOODEN HANDLE

1-50 . . . \$6.60/EACH  
51-99 . . \$6.20/EACH  
100+ . . . \$5.85/EACH  
RETAIL (\$11.00)  
ITEM ID - TB16



### 3/32" BENT TUNGSTEN RAKE

1-50 . . . \$9.25/EACH  
51-99 . . \$8.75/EACH  
100+ . . . \$8.25/EACH  
RETAIL (\$17.00)  
ITEM ID - BTR



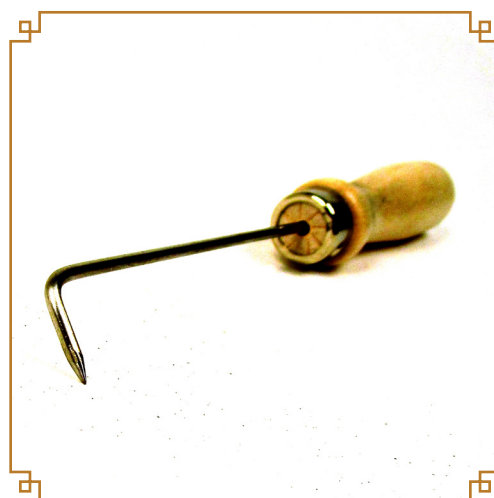
### 3/32" TUNGSTEN STRAIGHT RAKE/ POKER WITH WOODEN HANDLE

1-50 . . . \$7.50/EACH  
51-99 . . \$7.10/EACH  
100+ . . . \$6.80/EACH  
RETAIL . (\$12.00)  
ITEM ID - TB32



### 3/32" BENT STAINLESS STEEL RAKE

1-50 . . . \$3.75/EACH  
51-99 . . \$3.00/EACH  
100+ . . . \$2.45/EACH  
RETAIL (\$7.00)  
ITEM ID - SSR



### 1/8" TUNGSTEN STRAIGHT RAKE/ POKER WITH WOODEN HANDLE

1-50 . . . \$8.25/EACH  
51-99 . . \$7.85/EACH  
100+ . . . \$7.45/EACH  
RETAIL (\$14.00)  
ITEM ID - TB8







## STAINLESS STEEL SHEARS

### NEW - LARGE DIAMOND SHEARS

This age old design is now available in a size geared to frameworking. The blades of these shears are each shaped with a large V in them. When the shears are closed onto hot, pliable glass, up to 1" in diameter, they form a square, or diamond, around the glass, contacting it in four spots. Squeeze the shears closed a little, and the glass uniformly constricts. Close the shears all the way and the glass is cut clean. These heavy duty large diamond shears have long lasting durability and excellent craftsmanship. They are ideal for cutting and shaping hot glass. Total length is 9.5", blade length is 50mm and blade thickness is 5mm.

**1-9 . . . . \$42.00**

**10+ . . . . \$40.50**

RETAIL (\$60.00)

ITEM ID - LGSHEAR



### NEW - SMALL CUP SHEARS

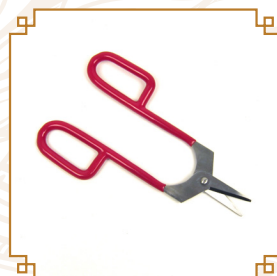
These Light Cup Shears are excellent for trimming hot glass pieces such as cups, goblets and blown vessels. They measure 8" in length, with a 1.5" long blade that is 2.5mm thick. The red handles help protect your hands from the heat and provide easy gripping. Made from stainless steel.

**1-9 . . . . \$17.50**

**10+ . . . . \$16.00**

RETAIL (\$25.00)

ITEM ID - SMCUP



### NEW - LARGE CUP SHEARS

These large cup shears measure 8" long, featuring stainless steel 1.5" blades that are 4mm thick. These well made shears are great for cutting and trimming hot glass on cups, goblets, or any blown vessel.

**1-9 . . . . \$29.00**

**10+ . . . . \$27.30**

RETAIL (\$39.00)

ITEM ID - LGCUP



### ECONOMY DIAMOND SHEARS

Diamond shears are an essential tool for any frameworkeer. These economy shears are very effective for creating clean openings when working with borosilicate as well as soft glass.

**1-9 . . . . \$29.00/EACH**

**10+ . . . . \$27.00/EACH**

RETAIL (\$40.00)

ITEM ID - ECOSHEARS





## JACKS

### MAGIC MINI JACKS

Scott's Magic "mini jacks" can be used to ream open the smallest opening using one of the triangle shaped blades and moving in and out of the flame. Use the outward force of the beveled edge jack blades for opening any 2" or smaller tube or encalmo section for a nice, even wall and cup shape. Other great uses for the "mini jacks" are finishing of hollow beads, pendant loops, fine tuning a mouth piece or raised carb, or even opening the constriction on a down stem.

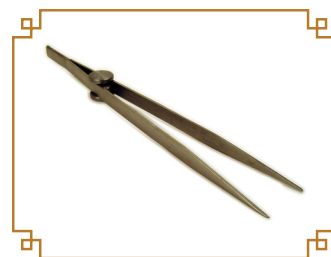
The "Mini jacks" are made of hardened stainless steel. The jacks can be held directly in the flame for a few seconds without damage to the steel. Although the ideal use of the jacks is with the glass in between the tool and the flame and in many cases the shaping is done just out side of the flame. The dimensions of this awesome tool are 8.5" long and the blades are .5mm at tip to 12mm at widest edge. The flare dimension range is from 1mm to 55mm.

**1-9 . . . . \$30.00/EACH**

**10+ . . . . \$27.00/EACH**

RETAIL (\$50.00)

ITEM ID - MJ02



### TRUE FLAMEWORKING JACKS

Our true Flameworking Jacks are the first of their kind. We made our jacks with the same trusted heat tempered stainless steel as our popular Mini Jacks. This kind of tempering allows the jack blades to tolerate constant exposure to heat and direct flame as required for this kind of tool. The jack blades are 2.75" long and have a rounded back edge. The tip curves in and comes to a fine point. The blades have been turned 90 degrees from the arms like traditional jacks. The overall length is 11.25" making these jacks truly the right scale for flameworking.

**1-9 . . . . \$72.50/EACH**

**10+ . . . . \$69.25/EACH**

(RETAIL-\$130)

ITEM ID - MJ03



### TUNG TWEEZERS

In response to heavy requests we pushed through our Tungsten Tweezers design. The longer than average tweezers are made of tempered stainless steel. The tungsten tips are replaceable which allows for different shaped tungsten to be used.

**1-9 . . . . \$38.50/EACH**

**10 . . . . \$36.25/EACH**

(RETAIL-\$68.00)

ITEM ID- MJ04



JACKS



## CLAW TOOLS/HOT FINGERS

We now offer the tool that every framemaker cannot live without, and that is always so hard to find, claw tools! We have 4 styles of Claw Tools: Small, Large, Ball Holders, and Inside/Outside Claws

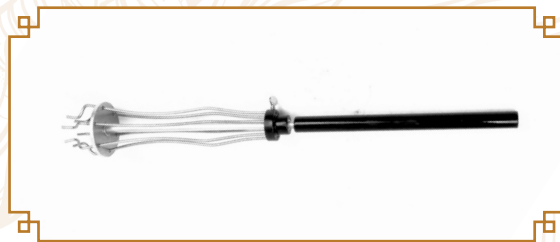
### Benefits of the claw tools include:

- ◆ Smooth sliding operation with a solid locking slide nut.
- ◆ Heavy duty holding fingers.
- ◆ Very small to wide holding diameter.
- ◆ Eliminate last punty in your process by holding the object with the claw fingers.
- ◆ A thicker wire gauge than your standard claw tool.
- ◆ A weighted handle that is comfortable to hold.
- ◆ High temperature powder coated handle and locking slide nut.

### NEW - INSIDE/OUTSIDE CLAW TOOL

This tool is made with the same quality design as its smaller counterparts including heavy gauge wire, a thick weighted handle, and smooth slide action. The size range for grabbing inside a cup is 1" - 2 5/8". The size range for grabbing the outside of a flared foot it 1.5" - 3".

**1-9 . . . \$69.50**  
**10+ . . . \$67.50**  
RETAIL (\$95.00)  
ITEM ID - CTINOUT



### STANDARD CLAW

**1 -14 . . . \$45.00/EACH**  
**15+ . . . \$43.00/EACH**  
RETAIL (\$65.00)  
ITEM ID - CT



### BALL LOOP CLAW

**1 -14 . . . \$45.00/EACH**  
**15+ . . . \$43.00/EACH**  
RETAIL (\$65.00)  
ITEM ID - CTBALL



### LARGE CLAW

**1 -14 . . . \$50.00/EACH**  
**15+ . . . \$47.00/EACH**  
RETAIL (\$72.00)  
ITEM ID - CTL







## FINISHING TONGS & HEAT RESISTANT SLEEVES

### NEW - FINISHING TONGS WITH SLEEVE

These tongs feature a heavy duty dual ply heat resistant (2,000°F) sleeve. This sleeve was made specifically for our tongs and has a snug fit. Replacement sleeves are available.

1-9 . . . \$52.00

10+ . . . \$48.00

RETAIL (\$80.00)

ITEM ID - LGTONG



### NEW - SERVING TONGS WITH SLEEVE

These are smaller tongs with a layered heat resistant (2,000°F) sleeve that are perfect for finishing smaller objects, and for moving items around in the kiln. Sleeves are wired securely to the tongs, but are easily replaced.

1-9 . . . \$18.50

10+ . . . \$17.25

RETAIL (\$26.50)

ITEM ID - TONGBBQ



## REPLACEMENT SLEEVES

We offer replacement sleeves for both the large and small tongs. These sleeves can also be used to turn your own pair of tongs into finishing tongs.

### NEW - LARGE REPLACEMENT SLEEVE

**1-9 . . . \$ 24.50**

**10+ . . . \$22.75**

RETAIL (\$35.00)

ITEM ID - LGTONGREP



### NEW - SMALL REPLACEMENT SLEEVE

**1-9 . . . \$8.05**

**10+ . . . \$7.80**

RETAIL (\$12.50)

ITEM ID - SMTONGREP



### NEW - HIGH TEMPERATURE WOVEN TAPE

This is a tightly woven tape with a vermiculite coating. This coating is an insulator for the glass tape and also allows the tape to deal with temperatures as high as 2000F. This is an asbestos free coating. The glass tape itself is non-toxic and when heated to a point of off-gassing, it does not off-gas any toxic fumes. Good for lathe chucks and other metal to glass applications. Sold by the foot, or as an entire roll.

**PER FOOT . . . \$0.90**

RETAIL (\$1.50/FT)

ITEM ID - TAPE01

**50 FT ROLL . . . \$69.00**

RETAIL (\$115/ROLL)

ITEM ID - TAPE01





## KEVLAR GLOVES AND SLEEVES

With years of frameworking experience, I have long been frustrated with the lack of sizes and options of protective gear, especially Kevlar gloves in the glass industry. So, I did some research and found a US manufacturer that had just what I was looking for, and I feel what you are looking for as well. We are offering a few different sizes and thicknesses to you which provides a range of dexterity and heat resistance.

### NEW - 7-GAUGE YELLOW GLOVES

#### YELLOW KEVLAR SMALL

1-9 . . . \$10.40/EACH

10+ . . . \$9.10/EACH

RETAIL (\$16.00)

ITEM ID - YK7GS

#### YELLOW KEVLAR MEDIUM

1-9 . . . \$10.40/EACH

10+ . . . \$9.10/EACH

RETAIL (\$16.00)

ITEM ID - YK7GM



#### YELLOW BLACK DOT MEDIUM

1-9 . . . \$9.10/EACH

10+ . . . \$8.40/EACH

RETAIL (\$14.00)

ITEM ID - YKBDM

### NEW - LIGHTWEIGHT BLACK GLOVE

The lightweight black gloves are slightly thinner than our yellow kevlar glove. One size fits most without all the unnecessary “slop.” It offers plenty of dexterity and a decent amount of heat resistance.

1-9 . . . \$7.80/EACH

10+ . . . \$6.00/EACH

RETAIL (10.00)

ITEM ID - BKGR





## NEW - 2-PLY BLACK GLOVES

These are very heavy duty 2-ply kevlar gloves. They have less dexterity than the other options we have available, but the heat resistance is top notch.

### 2-PLY BLACK SMALL

1-9 . . . . \$18.20/EACH

10+ . . . . \$16.80/EACH

RETAIL (\$28.00)

ITEM ID - 2PBKS

### 2-PLY BLACK MEDIUM

1-9 . . . . \$18.20/EACH

10+ . . . . \$16.80/EACH

RETAIL (\$28.00)

ITEM ID - 2PBKM

### 2-PLY BLACK LARGE

1-9 . . . . \$18.20/EACH

10+ . . . . \$16.80/EACH

RETAIL (\$28.00)

ITEM ID - 2PBKL



## SLEEVES

### BLACK KEVLAR SLEEVE 18"

1-9 . . . . \$6.60/EACH

10+ . . . . \$6.00/EACH

RETAIL (\$10.00)

ITEM ID - BKS18



### YELLOW KEVLAR SLEEVE W/ THUMB HOLE

1-9 . . . . \$7.80/EACH

10+ . . . . \$7.20/EACH

RETAIL (\$12.00)

ITEM ID - YKSTH

### YELLOW KEVLAR SLEEVE 18"

1-9 . . . . \$6.50/EACH

10+ . . . . \$6.00/EACH

RETAIL (\$10.00)

ITEM ID - YKS18





2017 WHOLESALE CATALOG

## **GRIFFIN GLASS TOOLS**

2071-A LAKE ROAD, ELMIRA, NY 14903

607-331-6221 (OWNER CELL) + 607-733-1222 (SHOP)

GRIFFINGLASS.COM + SCOTT@GRIFFINGLASS.COM